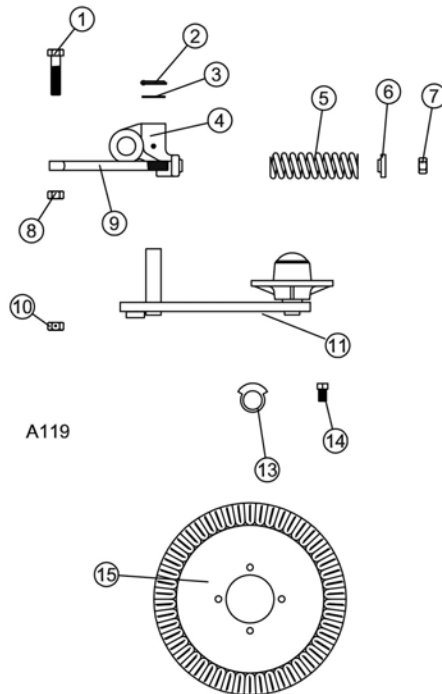


Yetter

FARM EQUIPMENT

2910 SERIES SPRING CUSHIONED PLOW COULTER PARTS & INSTALLATION

KEY.	QTY.	PART NO.	DESCRIPTION
1	1	2502-410	3/4-16 X 3" HHCS GR5 ZP
2	1	2531-125	1/4 X 1 3/4" COTTER KEY
3	1	2526-561	1-17/64"ID X 7/8" X 14GA MACHINERY BUSHING
4	1	2910-320	PIVOT CASTING
5	1	2910-311	SPRING
6	1	2910-302	SPRING BUSHING
7	1	2520-516	3/4-10 LOCK HEX NUT ZP
8	1	2520-508	3/4-16 HEX NUT ZP
9	1	2570-125	EYEBOLT, 3/4" EYE
10	1	2520-511	3/4-16 LOCK HEX NUT ZP
11	1	2910-201	COULTER ARM W.A.
12	1	2910-127	SPRING CUSHIONED BRKT. AND HUB ASSEMBLY (INCLUDES 1-11)
13	1	2910-301	LOCKING COLLAR
14	1	2503-379	5/8"-11 X 1 SQ. HCPSS GR. 2
15	OPT.	2571-076	20" RIPPLE BLADE
	OPT.	2571-077	17" RIPPLE BLADE



UPDATED 02/20/15

INSTALLATION AND OPERATING INSTRUCTIONS



Caution: COULTER BLADE HAS SHARP EDGE.
USE CARE WHEN WORKING WITH OR CLOSE TO BLADES

Place the coulters and locking collar (2910-301) over the shank then insert pin through the retainer hole. After aligning coulters for proper position, tighten setscrew in locking collar. When tightening setscrew, align locking collar in center of slot in hinge casting for maximum swivel.

The coulters are equipped with tapered bearings; and are pre-lubricated during assembly. Grease the zerk on the hinge casting (2910-320) prior to using the coulters then grease the hinge casting and hub assembly every 50 hours. Before going to the field, check the springs to be sure they have been given a preload tension. If the spring can be rotated on the push rod by hand, it is too loose and must be tightened. Failure to do so may result in lost parts or excessive wear. Approximately one inch of threads on the end of the push rod should be exposed when the spring is properly preloaded.

PERIODICALLY CHECK ALL NUTS TO BE SURE THEY ARE TIGHT.

YETTER MANUFACTURING CO.

FOUNDED 1930

Colchester, IL 62326-0358

Toll free: 800/447-5777

309/776-3222 (Fax)

Website: www.yetterco.com

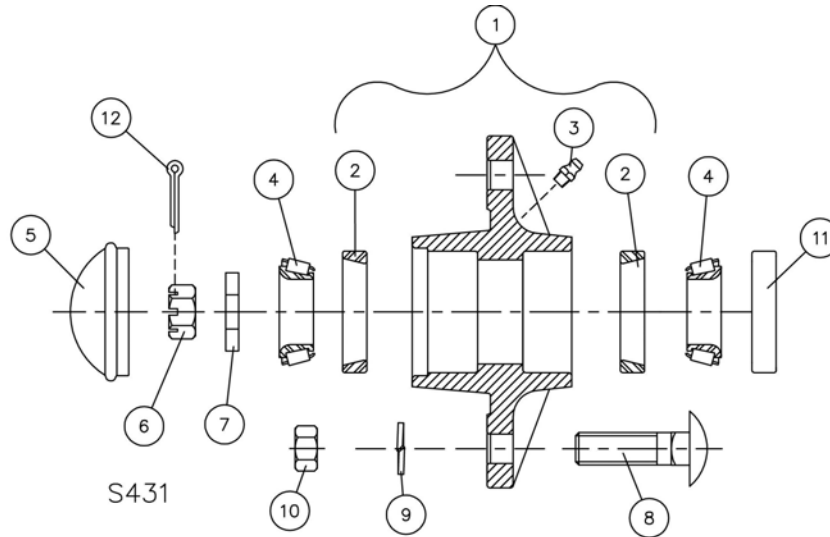
E-mail: info@yetterco.com

YETTER

Yetter

FARM EQUIPMENT

HUB ASSEMBLY



DET	QTY	PART NO.	DESCRIPTION
1	1	2900-105	HUB PRESSED ASSEMBLY
2	2	2550-029	LM67010 CUP (PRE-ASSEMBLED W/NO. 1)
3	1	2533-110	1/4-28 ZERK STRAIGHT SELF-TAP (PRE-ASSEMBLED W/NO. 1)
4	2	2550-027	LM67048 CONE
5	1	2570-375	HUB CAP
6	1	2520-469	5/8-18 SLOTTED HEX NUT, BLACK
7	1	2526-449	5/8" FLATWASHER, 1/4" THK.
8	4	2505-337	1/2-13 X 1-1/4 CAR BLT GR 5
9	4	2525-352	1/2" MED LOCKWASHER ZYD.
10	4	2520-352	1/2-13 HEX NUT ZYD
11	1	2550-066	TRIPLE LIP SEAL, NTI #1812-4
12	1	2531-102	1/8 X 1/4 COTTER PIN, BLACK
		2900-123	HUB ASSEMBLY (INCLUDES #'S 1 THRU 11)

UPDATED 02/20/15

2565-184_REV_A 02/15

YETTER